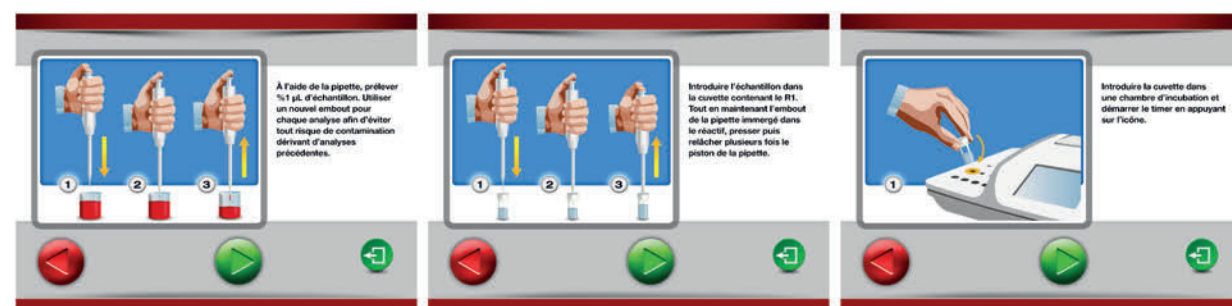


	TEST	Measuring range	Repeatability	Resolution	Testing time
Sugars	Sugars in wine	0,10 - 18,00 g/L	0,2 g/L	0,01 g/L	6 min
	Sugars in must sparkling wine	6,0 - 350,0 g/L	2 g/L	1 g/L	6 min
	* Glucose and fructose in wine	0,05 - 18,00 g/L	0,2 g/L	0,1 g/L	6 min
	* Glucose and fructose in must, sparkling wine	3,0 - 350 g/L	2 g/L	1 g/L	6 min
SO ₂	Free SO ₂	1 - 60 mg/L	1,5 mg/L	1 mg/L	3 min
	Total SO ₂	15 - 250 mg/L	2,5 mg/L	1 mg/L	1 min
Malolactic	L-Malic acid	0,05 - 5,00 g/L	0,05 g/L	0,01 g/L	4 min
	L-Lactic acid	0,05 - 4,00 g/L	0,05 g/L	0,01 g/L	6 min
	* Malolactic fermentation	0,05 - 5,00 g/L	0,05 g/L	0,01 g/L	10 min
	Acetic acid	0,05 - 1,20 g/L	0,02 g/L	0,01 g/L	6 min
Nitrogen	Total acidity	1 - 10 g/L tartaric acid	0,13 g/L	0,1 g/L	1 min
	pH	3,00 - 4,00	0,02	0,01	1 min
	Alcohol by volume	0,1 - 17% vol.	0,2 % vol.	0,1% vol.	5 min
	Organic nitrogen	30 - 300 mg/L	2 mg/L	1 mg/L	4 min
	Inorganic nitrogen	30 - 300 mg/L	2 mg/L	1 mg/L	4 min
	Acetaldehyde	18 - 300 mg/L	2 mg/L	1 mg/L	6 min
	Gluconic acid	0,1 - 3 g/L	0,05 g/L	0,01 g/L	6 min
	Glycerol	2 - 15 g/L	0,02 mg/L	0,1 g/L	6 min
	Copper	0,05 - 1,00 mg/L	0,03 mg/L	0,01 mg/L	5 min
	Antocyanes	10 - 1000 mg/L cyanidin-3-o-glucoside	15 mg/L	1 mg/L	1 min + 60 min for extraction
Polyphenols	Polyphenols FC	150 - 3300 mg/L gallic acid	10 mg/L	1 mg/L	5 min
	* Catechins	1 - 40 mg/L	2 mg/L	1 mg/L	5 min
	* Total polyphenol index	2 - 100 D.O. 280 nm	0,4 D.O. 280 nm	0,1 D.O. 280 nm	11 min
	* Intensity	1,0 - 40,0 D.O.	0,002 D.O.	0,001 D.O.	5 min
Color	* Tonality	∞	0,002 D.O.	0,001 D.O.	5 min

* Available only with the WineLab Touch model.

WineLab Junior is configured as you like.



Just few steps are required to perform a test. The **HELP** function on the display will lead you step by step through the process.

THE INNOVATION IN THE ANALYSES OF WINE



THE INNOVATION IN THE ANALYSES OF WINE

THE SYSTEM

CDR WineLab is composed of a thermostated analyzer based on **photometric technology** that uses **LED**; a kit with disposable pre-vialled **reagents** with **low toxicity**, in package of 10 tests, 1 year shelf life, developed and produced by the research laboratories of CDR.

REDUCED TESTING TIMES

With **CDR WineLab** now it is possible to perform the analyses autonomously, in your own winery, easily and rapidly, without relying on dedicated external laboratories. It is possible to **analyze 16 samples at the same time** (with the **CDR WineLab Touch model**) and to monitor constantly the production process, obtaining in few minutes exact and accurate answers.

EASY TO USE

The system is designed to be used by anyone, without the support of skilled staff.

The analysis methods are easier than the traditional ones and can be performed in few steps:

- 1** Adding the sample volume to the pre-vialled reagent.
- 2** Following the displayed instructions and if there is ever a doubt, the **HELP function** will lead you through the process.
- 3** Results are automatically calculated, displayed and printed.

RELIABLE

This measuring system owes its **sensitivity, accuracy and reliability** to the photometric technology based on LED luminous sources.

The **results** of the analyses are **correlated with the reference methods**.



CDR WineLab Touch

Full panel of analyses



CDR WineLab Junior

Tailored panel of analyses

Display	
5,7" TFT color LCD touchscreen	4,3" Wide TFT color LCD touchscreen
Connectivity	
2 USB 2.0 to transfer the database of performed tests and update the configuration and software	1 USB type B for technical service and PC connection
1 USB type B for technical service and PC connection	Bluetooth 2.1
1 Ethernet (LAN)	
Storage	
4 GB internal memory to store the performed tests	4 GB internal memory to store the performed tests
Database format	
CSV and XML file, compatible with all formats of database (e.g.: xls, SQL)	CSV and XML file, compatible with all formats of database (e.g.: xls, SQL)
Photometric module	
6 different wavelengths in 4 reading cells	6 different wavelengths in 4 reading cells
Incubation module	
37°C thermostated block with 16 positions	37°C thermostated block with 3 positions
Number of samples you can analyze at the same time	
16	3
Multitasking mode (possibility to perform more analyses on the same sample)	
Yes	No
Printer	
Graphic printer on board 80 mm width	Absent
Dimension and weight	
32 x 29,5 x 13 cm (W x D x H) 2,80 Kg	15 x 22 x 8,3 cm (W x D x H) - 0,80 Kg
Power supply	
24 V	24 V or lithium ion battery (optional)
Configuration / Analyses	
Configuration with the full panel of analyses	Configuration with tailored panel of analyses